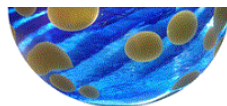


2020 Tuition



Peace School Secondary Education
www.peace.school.nz

Last updated September 2019

All amounts are subject to change, and will increase 5% per annum, inclusive of GST

TUITION	Inc GST	Comments
Tuition per annum	\$ 8,653	4 equal payments due two weeks before the start of each term

Joining costs

Application Fee:	\$ 270	Standard for all applicants; non refundable; includes, administration fee and interview. No Uniform costs.
Bond:	\$ 2,163.31	
First term Tuition	\$ 2,163	Standard term tuition - (rounded up to the nearest half term for 5 weeks or less - divide tuition by 2)
TOTAL	\$ 4,597	

Additional Costs per term (4 terms)

Camp	\$ 270	for all students 4 times a year
------	--------	---------------------------------

Notes All amounts are payable ONLY by automatic Direct Credit from bank account.

There is no facility for cash, cheques, or credit cards.

PEACE EXPERIMENT TRUST; BNZ, 02 0224 0368541-000

Annual Tuition increase	Each year there will be 5% increase on all fees charged. Our greatest cost is teaching staff and salaries are set to increase annually according to experience.
Bond	Parents will need to put a bond in place. The bond becomes the last term's fees only in the case of notice of withdrawal and requires one full term in writing. If insufficient notice is given the bond will not be released.
Donations	Peace Experiment Limited is a not for profit company and a registered charity. All surplus finances are fed directly back to support the school. Parents may choose to donate to the Trust account any amount above their tuition and other expense; that will assist scholarships for other students.
Included in Tuition	Stationery, Photocopying, Materials (unless otherwise specified) are included in tuition; there are no uniform costs
Late Payments	Late payments and non payments will incur administration charges of \$50 and risk the loss of the bond, and possibly the enrolment position. External agencies may be used to ensure payment of fees.
Paying in Advance	Parents may choose to pay in advance, for as many years as they want to at the current rate and the tuition will be credited against their account in future terms.
Payments	Payments are to be made in full by two weeks prior to the start of each term. Regular fortnightly payments can be made only when the bond (equivalent to one term's fees) is in place.
Tax	IRD's position is that the independent school tuition fees don't qualify as a gift or donation tax credits
International Students	International Student tuition, bond and application fee are charged at 1.5 times the quoted Domestic Rate. Camps are paid at the same rate as for domestic students.
Withdraw	Written statements of the intent to withdraw in the following term (giving ten full weeks notice), must also be received by two full weeks prior to the final term starting.